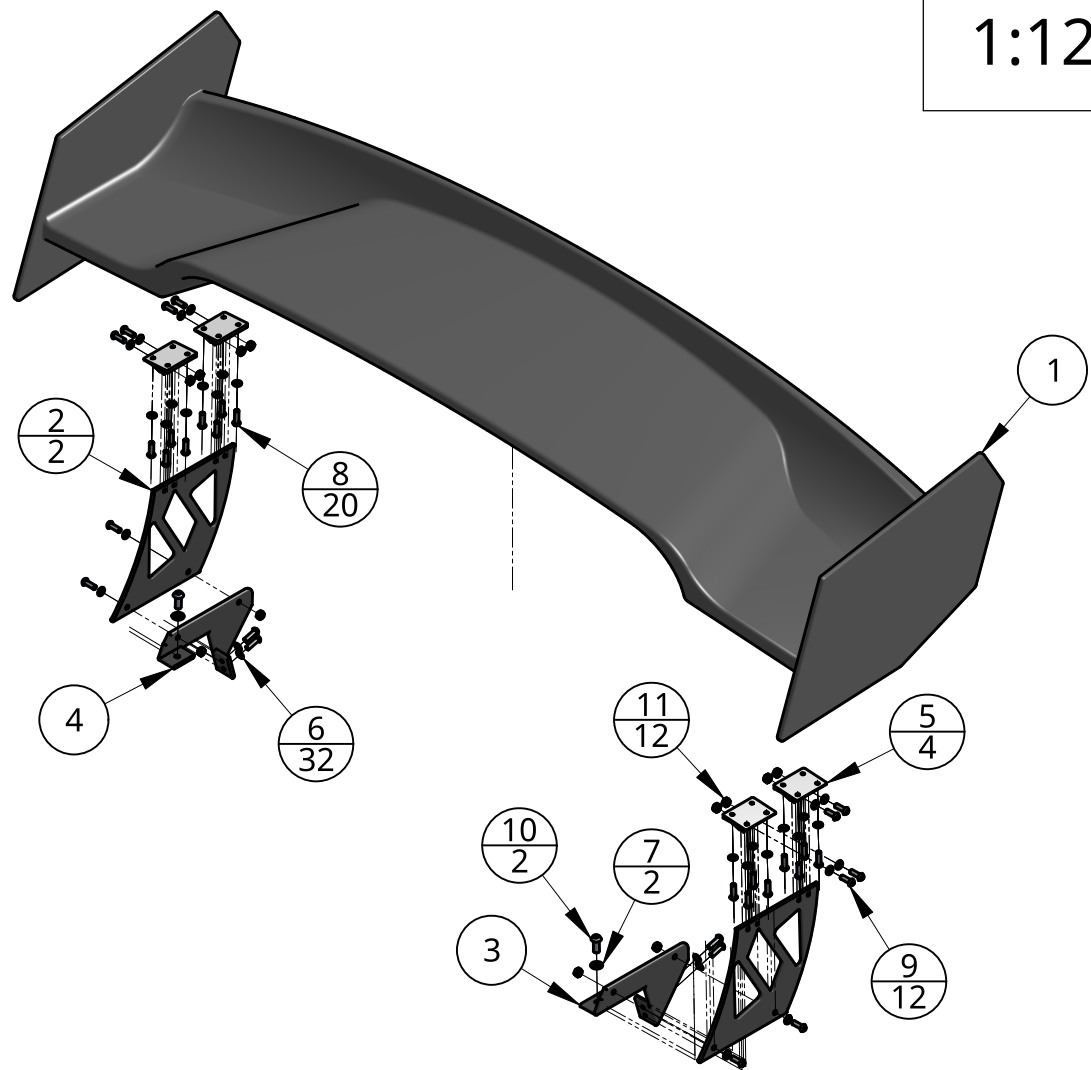
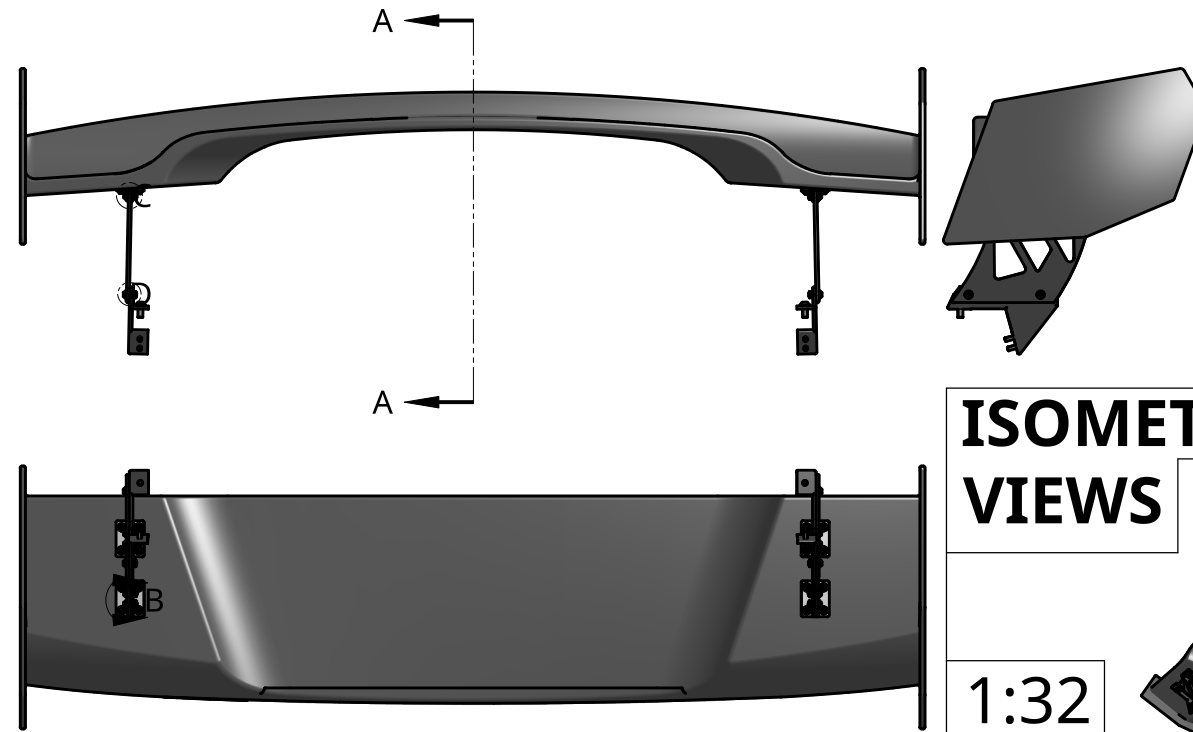


EXPLODED VIEW



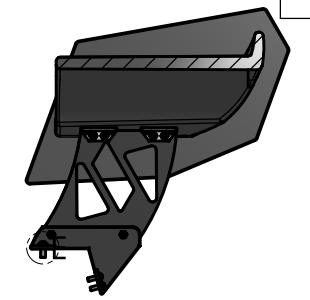
1:12

ORTHOGRAPHIC PROJECTIONS



1:12

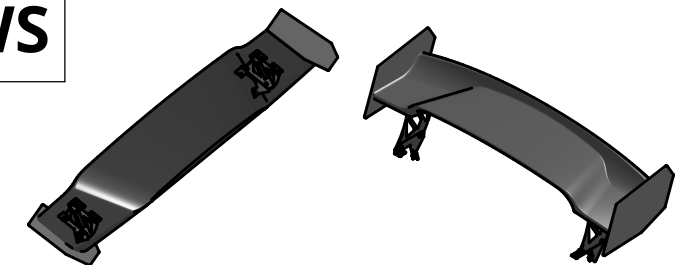
SECTION VIEW



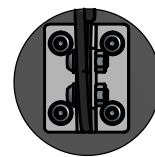
1:12

SECTION A - A

ISOMETRIC VIEWS

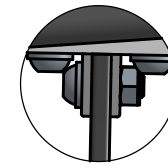


1:32



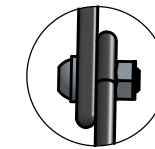
DETAIL B
SCALE 1:4

A socket button head screw is driven through a washer to connect the mounting bracket to the airfoil. There are 16 screws and washers to connect all mounting brackets to the airfoil.



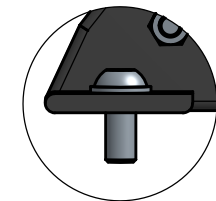
DETAIL C
SCALE 1:2

A socket button head screw is driven through a washer and secured with a hex nut to hold the upper portion of the spoiler stand on the mounting bracket. The mounting bracket is finished with High-Durability Polyester Powder Coat. There are 8 screws, washers, and nuts to hold all spoiler stands to the mounting brackets.



DETAIL D
SCALE 1:2

The identical fastener assembly consisting of a bolt, washer, and nut is used to connect the upper portion of the spoiler stand to the lower portion of the spoiler stand. There are 4 screws, washers, and nuts to connect all stands.



DETAIL E
SCALE 1:2

A socket button head screw is driven through a washer to connect the spoiler stands to the trunk lid. There are 6 screws and washers to connect all stands to the trunk lid.

DETAIL VIEWS

Item	Quantity	Name	Material
1	1	Airfoil	Carbon Fiber
2	2	Upper Spoiler Stand	Carbon Fiber
3	1	Lower Spoiler Stand	Carbon Fiber
4	1	Lower Spoiler Stand - Mirrored	Carbon Fiber
5	4	Spoiler Mounting Bracket	Steel
6	32	Plain washer normal grade A M6	Stainless Steel
7	2	Plain washer normal grade A M8	Stainless Steel
8	20	Socket button head screw M6x1 x 20	Stainless Steel
9	12	Socket button head screw M6x1 x 18	Stainless Steel
10	2	Socket button head screw M8x1.25 x 20	Stainless Steel
11	12	Hex nut grade A & B M6x1	Stainless Steel

LUMION RENDERINGS



Student Name:
BRODY DAI

School:
SWWC

Grade Level: 9 10 11 12
Category: Engineering Design Design Concept

email Address:
daib@salinehornets.org

Teacher Name:
Steve Vasiloff